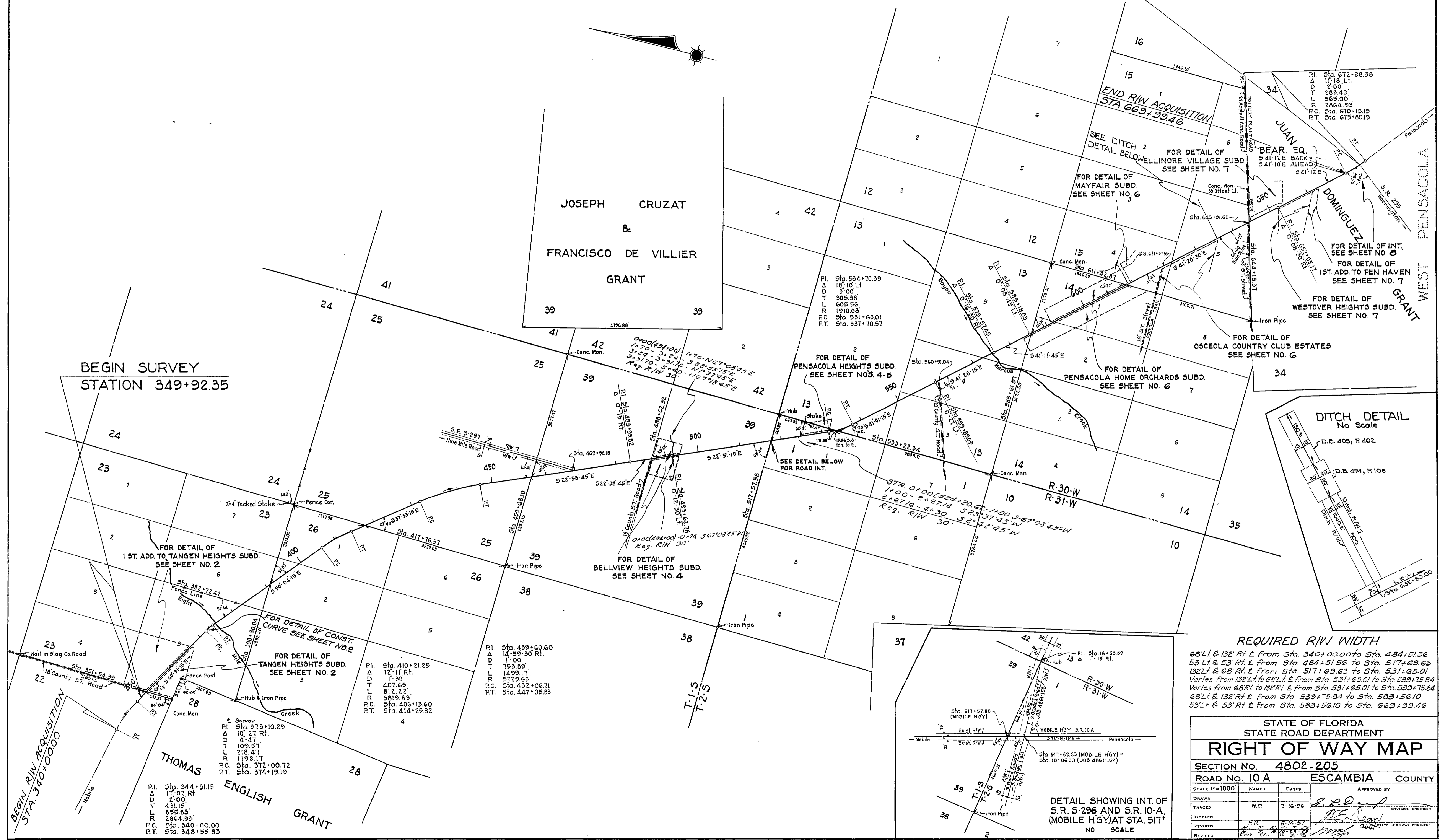


4802 205

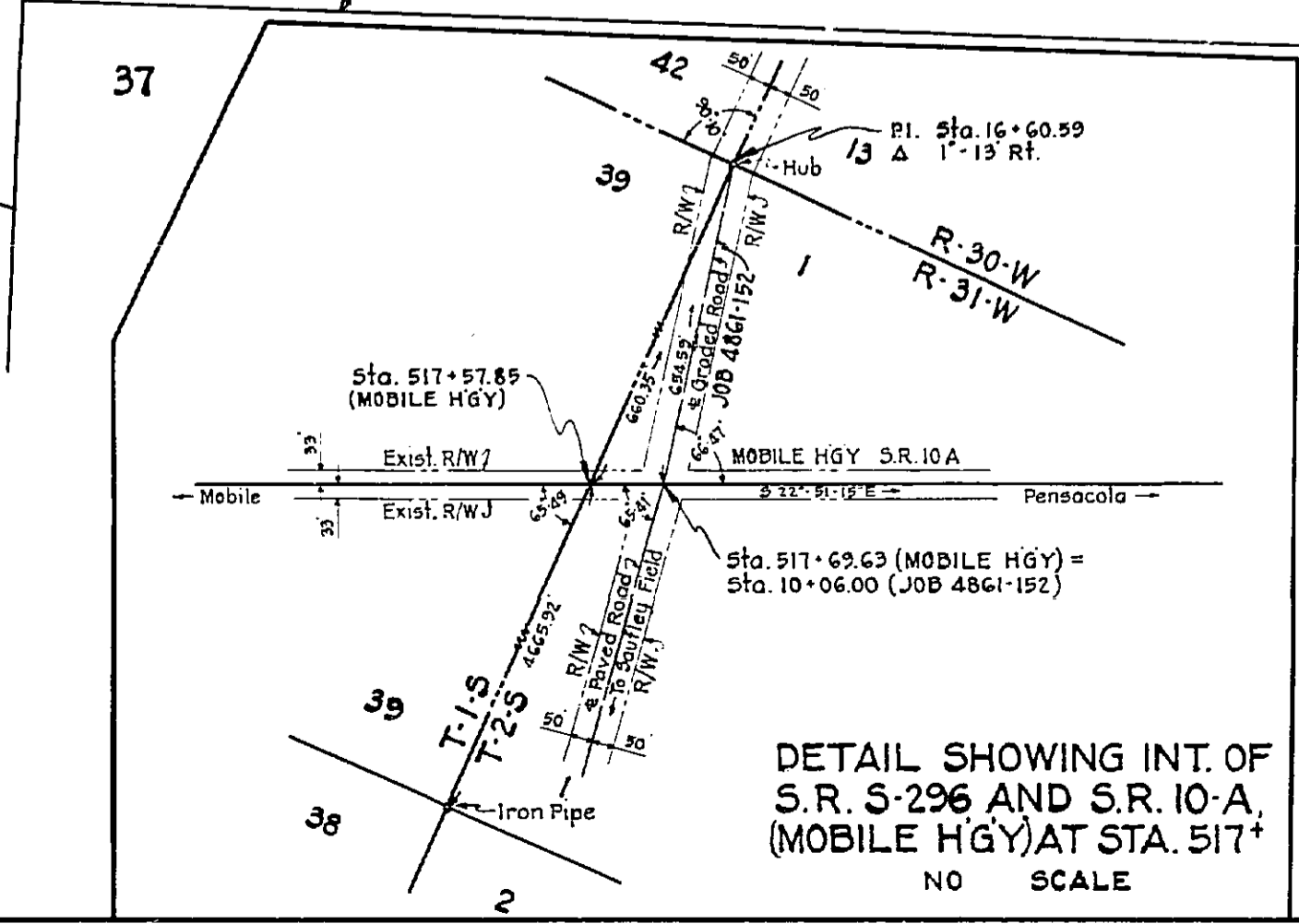
END SURVEY
STATION 674+12.66

FED. ROAD DIV. No.	STATE	SEC. AND JOB No.	FISCAL YEAR	SHEET No.	TOTAL SHEETS
3	FLA.	4802-205	56	1	



BEGIN SURVEY
STATION 349+92.35

REQUIRED R/W WIDTH
 68' Lt. & 132' Rt. E from Sta. 340+00.00 to Sta. 484+51.56
 53' Lt. & 53' Rt. E from Sta. 484+51.56 to Sta. 517+69.63
 132' Lt. & 68' Rt. E from Sta. 517+69.63 to Sta. 531+65.01
 Varies from 68' Lt. to 132' Rt. E from Sta. 531+65.01 to Sta. 533+75.84
 68' Lt. & 132' Rt. E from Sta. 533+75.84 to Sta. 583+56.10
 53' Lt. & 53' Rt. E from Sta. 583+56.10 to Sta. 663+39.46



DETAIL SHOWING INT. OF
S.R. S-296 AND S.R. 10-A,
(MOBILE HGWY) AT STA. 517+
NO SCALE

STATE OF FLORIDA STATE ROAD DEPARTMENT	
RIGHT OF WAY MAP	
SECTION No.	4802-205
ROAD No.	10 A ESCAMBIA COUNTY
SCALE 1"=1000'	
DRAWN	NAME: W.P. DATES: 7-16-56
TRACED	W.P.
INDEXED	
REVISED	R.R. 5-12-57
REVISED	10-30-58

FOR DETAIL OF
1ST. ADD. TO TANGEN HEIGHTS SUBD.
SEE SHEET NO. 2

FOR DETAIL OF CONST.
CURVE SEE SHEET NO. 2

FOR DETAIL OF
TANGEN HEIGHTS SUBD.
SEE SHEET NO. 2

FOR DETAIL OF
BELLVIEW HEIGHTS SUBD.
SEE SHEET NO. 4

SEE DETAIL BELOW
FOR ROAD INT.

FOR DETAIL OF
PENSACOLA HEIGHTS SUBD.
SEE SHEET NOS. 4-5

FOR DETAIL OF
PENSACOLA HOME ORCHARDS SUBD.
SEE SHEET NO. 6

FOR DETAIL OF
OSCEOLA COUNTRY CLUB ESTATES
SEE SHEET NO. 6

FOR DETAIL OF INT.
SEE SHEET NO. 8

FOR DETAIL OF
1ST. ADD. TO PEN HAVEN
SEE SHEET NO. 7

FOR DETAIL OF
WESTOVER HEIGHTS SUBD.
SEE SHEET NO. 7

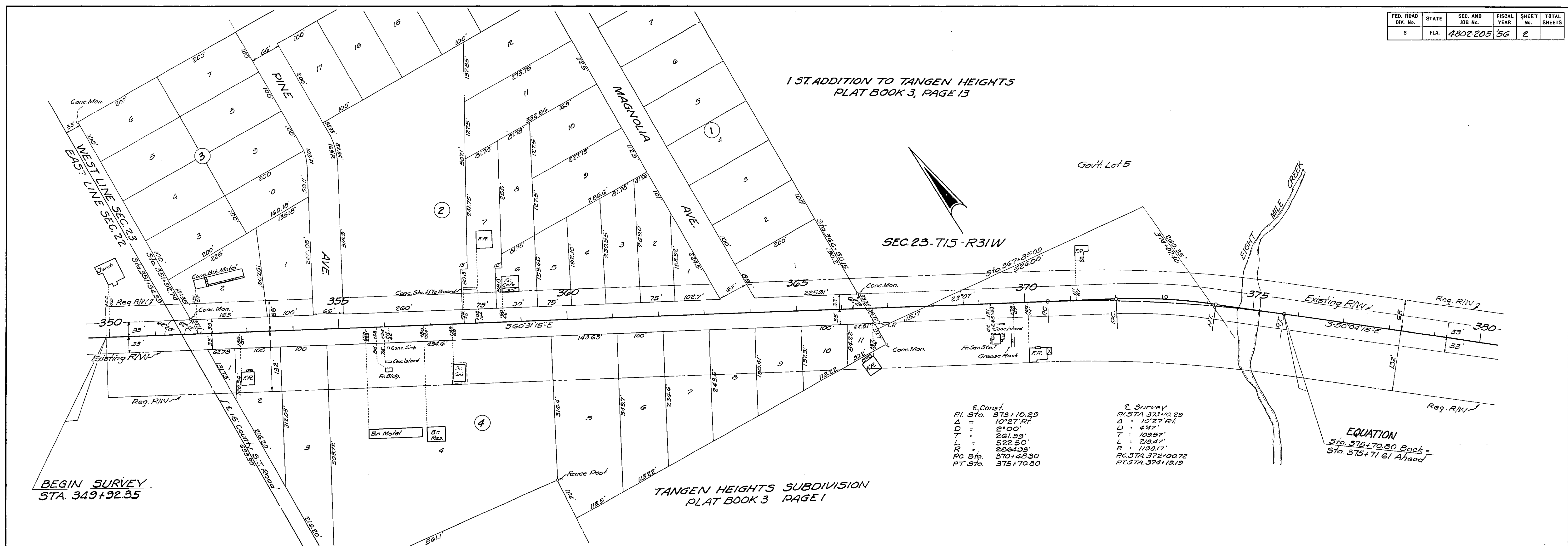
P.I. Sta. 410+21.25
 Δ 12'-11" Rt.
 D 1'-30"
 T 753.89'
 L 1499.17'
 R 5719.65'
 P.C. Sta. 432+06.71
 P.T. Sta. 447+05.88

P.I. Sta. 534+70.39
 Δ 18'-10" Lt.
 D 3'-00"
 T 305.38'
 L 605.56'
 R 1910.08'
 P.C. Sta. 531+65.01
 P.T. Sta. 537+70.57

P.I. Sta. 672+98.58
 Δ 11'-18" Lt.
 D 2'-00"
 T 283.43'
 L 565.00'
 R 2864.93'
 P.C. Sta. 670+15.15
 P.T. Sta. 675+80.15

P.I. Sta. 344+31.15
 Δ 11'-07" Rt.
 D 4'-47"
 T 109.57'
 L 218.47'
 R 1198.17'
 P.C. Sta. 372+00.72
 P.T. Sta. 374+19.19

4802 205 2



1 ST. ADDITION TO TANGEN HEIGHTS
PLAT BOOK 3, PAGE 13

SEC. 23-T15-R31W

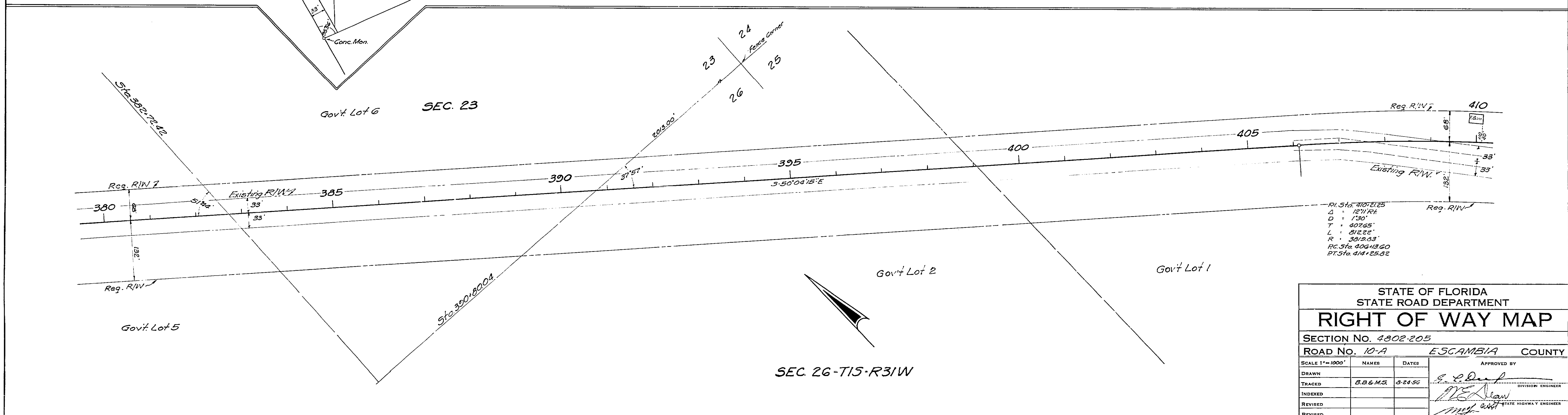
TANGEN HEIGHTS SUBDIVISION
PLAT BOOK 3 PAGE 1

E. Const.
 P.I. Sta. 373+10.20
 $\Delta = 10^{\circ}27' R$
 D = 497'
 T = 103.57'
 L = 522.50'
 R = 2504.93'
 P.C. Sta. 370+48.30
 P.T. Sta. 375+70.80

E. Survey
 P.I. Sta. 373+10.20
 $\Delta = 10^{\circ}27' R$
 D = 497'
 T = 103.57'
 L = 522.50'
 R = 2504.93'
 P.C. Sta. 372+00.72
 P.T. Sta. 374+19.19

EQUATION
Sta. 375+70.80 Back =
Sta. 375+71.61 Ahead

BEGIN SURVEY
Sta. 349+92.35



SEC. 26-T15-R31W

STATE OF FLORIDA
STATE ROAD DEPARTMENT

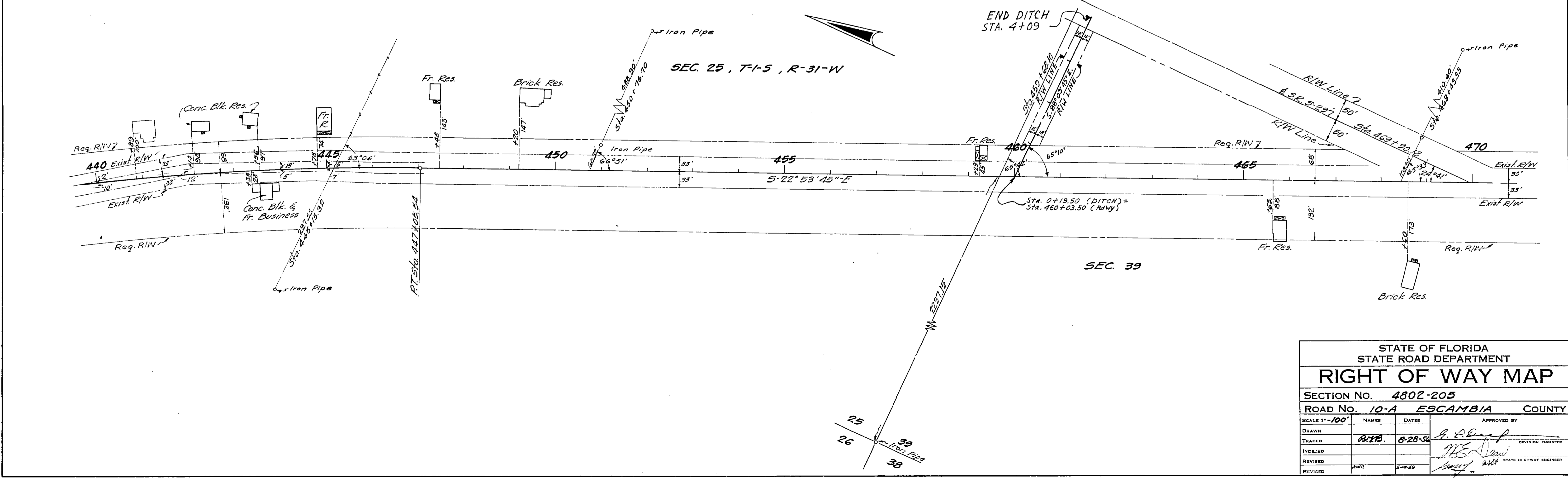
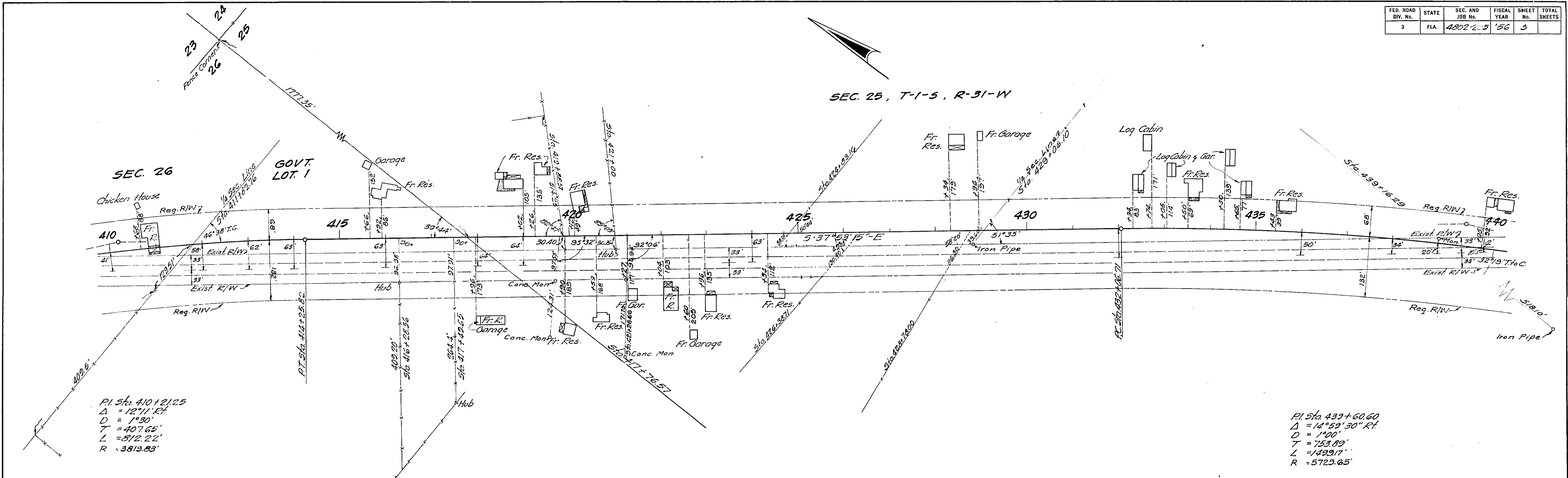
RIGHT OF WAY MAP

SECTION No. 4802-205
ROAD No. 10-A ESCAMBIA COUNTY

SCALE 1"=1000'	NAMES	DATES	APPROVED BY
DRAWN	B.B. & M.S.	3-24-56	<i>E. L. Duff</i> DIVISION ENGINEER
INDEXED			<i>M. S. Duff</i> STATE HIGHWAY ENGINEER
REVISED			

FED. ROAD DIV. No.	STATE	SEC. AND JOB No.	FISCAL YEAR	SHEET No.	TOTAL SHEETS
3	FLA.	4802-205	'56	3	

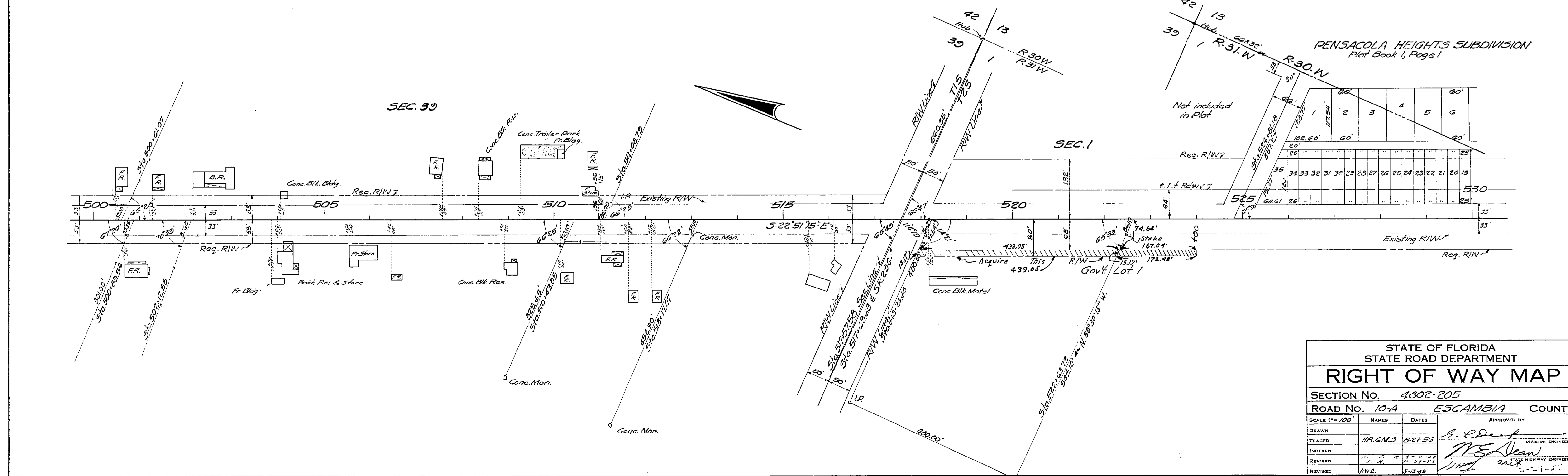
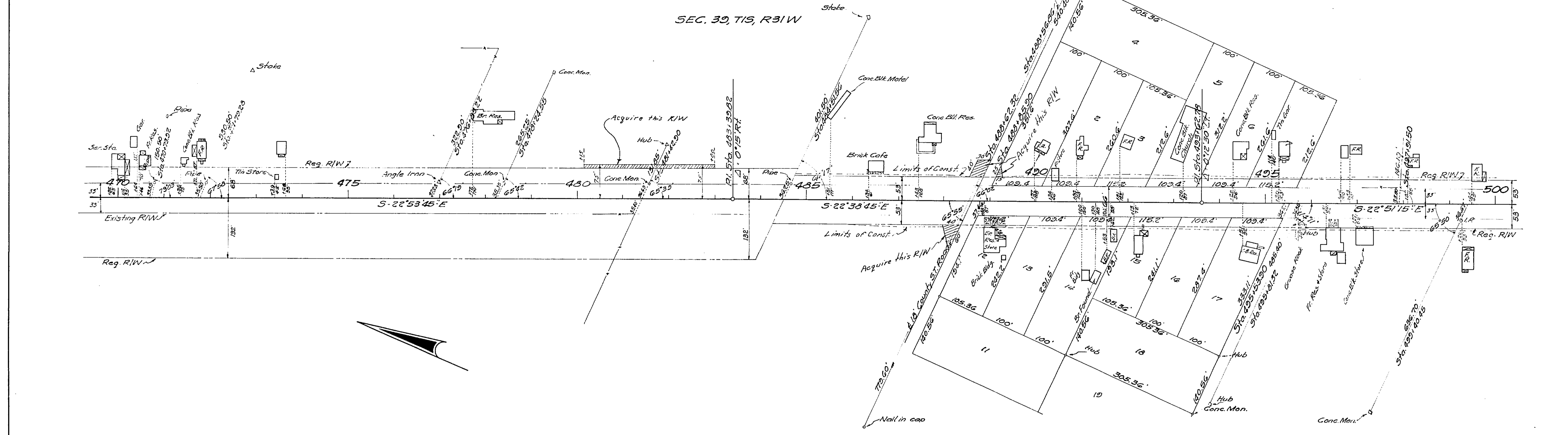
4802 205 3



STATE OF FLORIDA STATE ROAD DEPARTMENT				
RIGHT OF WAY MAP				
SECTION NO. 4802-205				
ROAD NO. 10-A ESCAMBIA COUNTY				
SCALE 1"=100'	NAMES	DATES	APPROVED BY	
DRAWN			G. P. Duff	
TRACED	B.H.B.	8-28-56	DIVISION ENGINEER	
INDEXED			M. S. Law	
REVISED	AWZ	5-4-59	STATE HIGHWAY ENGINEER	
REVISED				

FED. ROAD DIV. No.	STATE	SEC. AND JOB No.	FISCAL YEAR	SHEET No.	TOTAL SHEETS
3	FLA.	4802-205	56	4	

BELLVIEW HEIGHTS SUBDIVISION
Plat Book 1, Page 27



STATE OF FLORIDA
STATE ROAD DEPARTMENT

RIGHT OF WAY MAP

SECTION No. 4802-205
ROAD No. 10-A ESCAMBIA COUNTY

SCALE 1"=100'	NAMES	DATES	APPROVED BY
DRAWN	HR.G.M.S	8-27-56	<i>[Signature]</i> DIVISION ENGINEER
INDEXED			<i>[Signature]</i> HIGHWAY ENGINEER
REVISED			
REVISED	AWL	5-13-59	

4802 205 4

FED. ROAD DIV. No.	STATE	SEC. AND JOB No.	FISCAL YEAR	SHEET No.	TOTAL SHEETS
3	FLA.	4802-205	56	5	

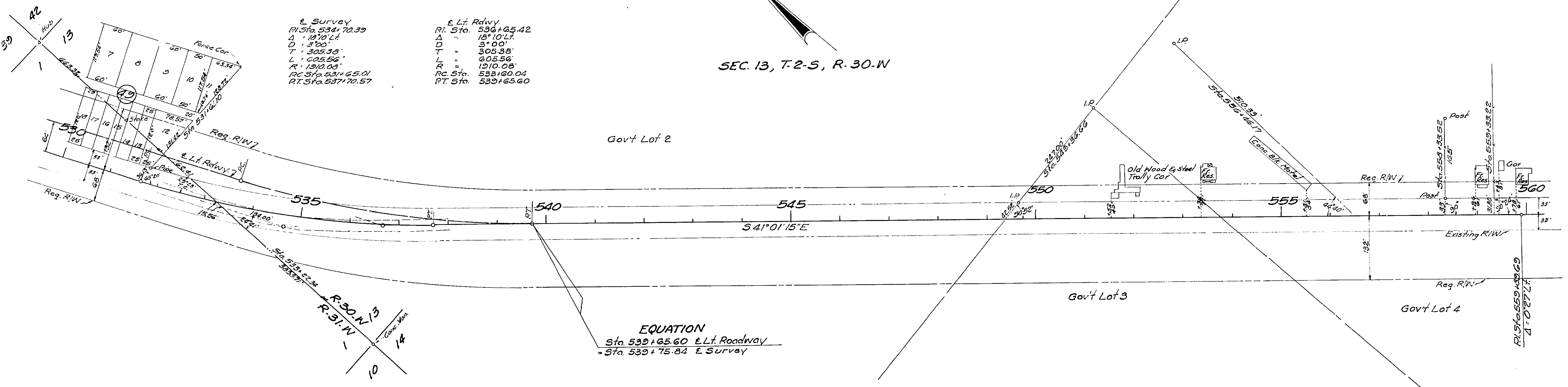
PENSACOLA HEIGHTS SUBDIVISION
Plat Book 1, Page 1

5
205
4802

E. Survey
 PI. Sta. 534+70.39
 $\Delta = 18^{\circ}10'14''$
 $D = 3^{\circ}00'$
 $T = 305.38'$
 $L = 605.56'$
 $R = 1910.03'$
 PC. Sta. 531+65.01
 PT. Sta. 537+70.57

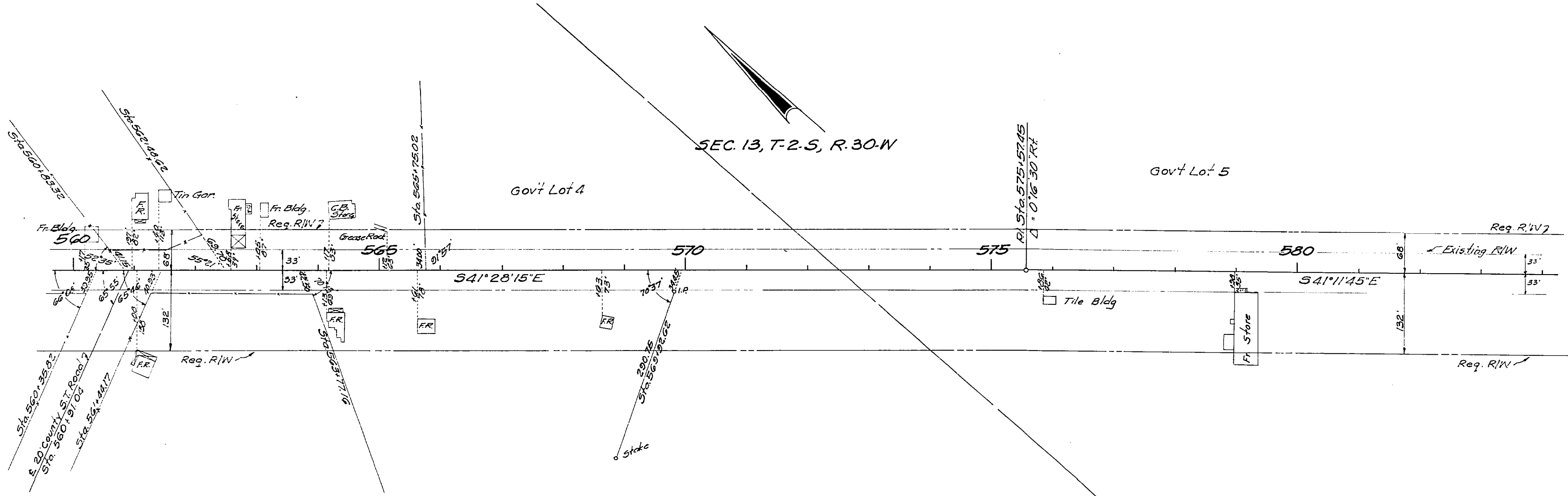
E. Lt. Rdwy.
 PI. Sta. 536+65.42
 $\Delta = 18^{\circ}10'14''$
 $D = 3^{\circ}00'$
 $T = 305.38'$
 $L = 605.56'$
 $R = 1910.03'$
 PC. Sta. 533+60.04
 PT. Sta. 539+65.60

SEC. 13, T. 2-S, R. 30-W



EQUATION
 Sta. 539+65.60 E.Lt. Roadway
 = Sta. 539+75.84 E. Survey

SEC. 13, T. 2-S, R. 30-W



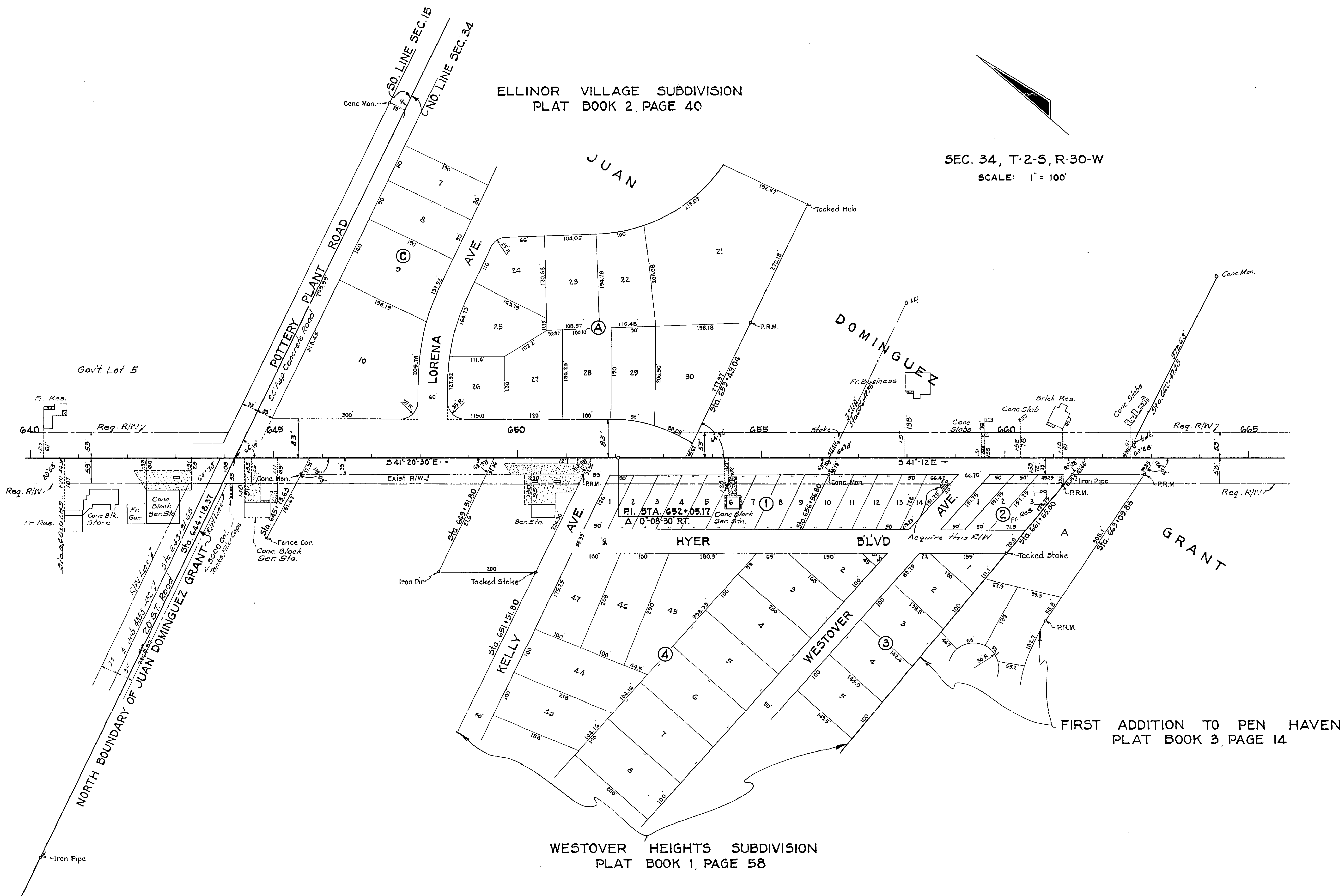
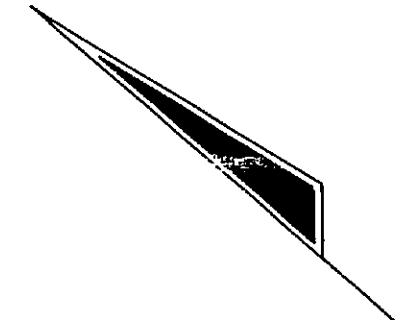
STATE OF FLORIDA STATE ROAD DEPARTMENT			
RIGHT OF WAY MAP			
SECTION NO. 4802-205			
ROAD NO. 10-A		ESCAMBIA COUNTY	
SCALE 1"=100'	NAMES	DATES	APPROVED BY
DRAWN			 DIVISION ENGINEER
TRACED	M.S.	8-29-56	
INDEXED			
REVISED			
REVISED			 STATE HIGHWAY ENGINEER

FED. ROAD DIV. No.	STATE	SEC. AND JOB No.	FISCAL YEAR	SHEET No.	TOTAL SHEETS
3	FLA.	4802-205	56	7	

4802 205 7

ELLINOR VILLAGE SUBDIVISION
PLAT BOOK 2, PAGE 40

SEC. 34, T-2-S, R-30-W
SCALE: 1" = 100'

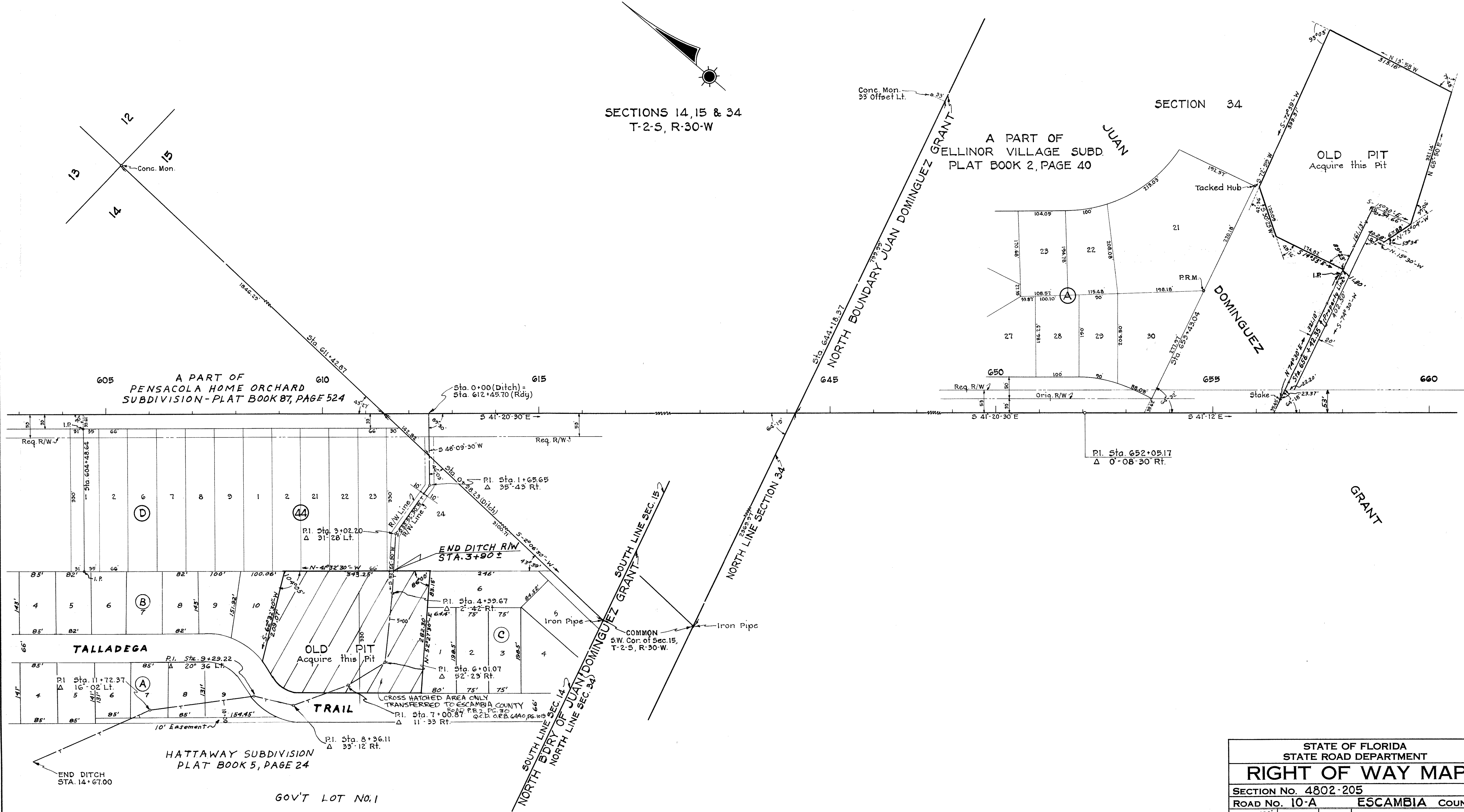


FIRST ADDITION TO PEN HAVEN
PLAT BOOK 3, PAGE 14

WESTOVER HEIGHTS SUBDIVISION
PLAT BOOK 1, PAGE 58

STATE OF FLORIDA STATE ROAD DEPARTMENT			
RIGHT OF WAY MAP			
SECTION No. 4802-205		ESCAMBIA COUNTY	
ROAD No. 10A			
SCALE 1" =	NAME	DATE	APPROVED BY
DRAWN	W.P.	7-17-56	<i>[Signature]</i> DIVISION ENGINEER
INDEXED			<i>[Signature]</i> STATE HIGHWAY ENGINEER
REVISED			
REVISED			

SECTIONS 14, 15 & 34
T-2-S, R-30-W



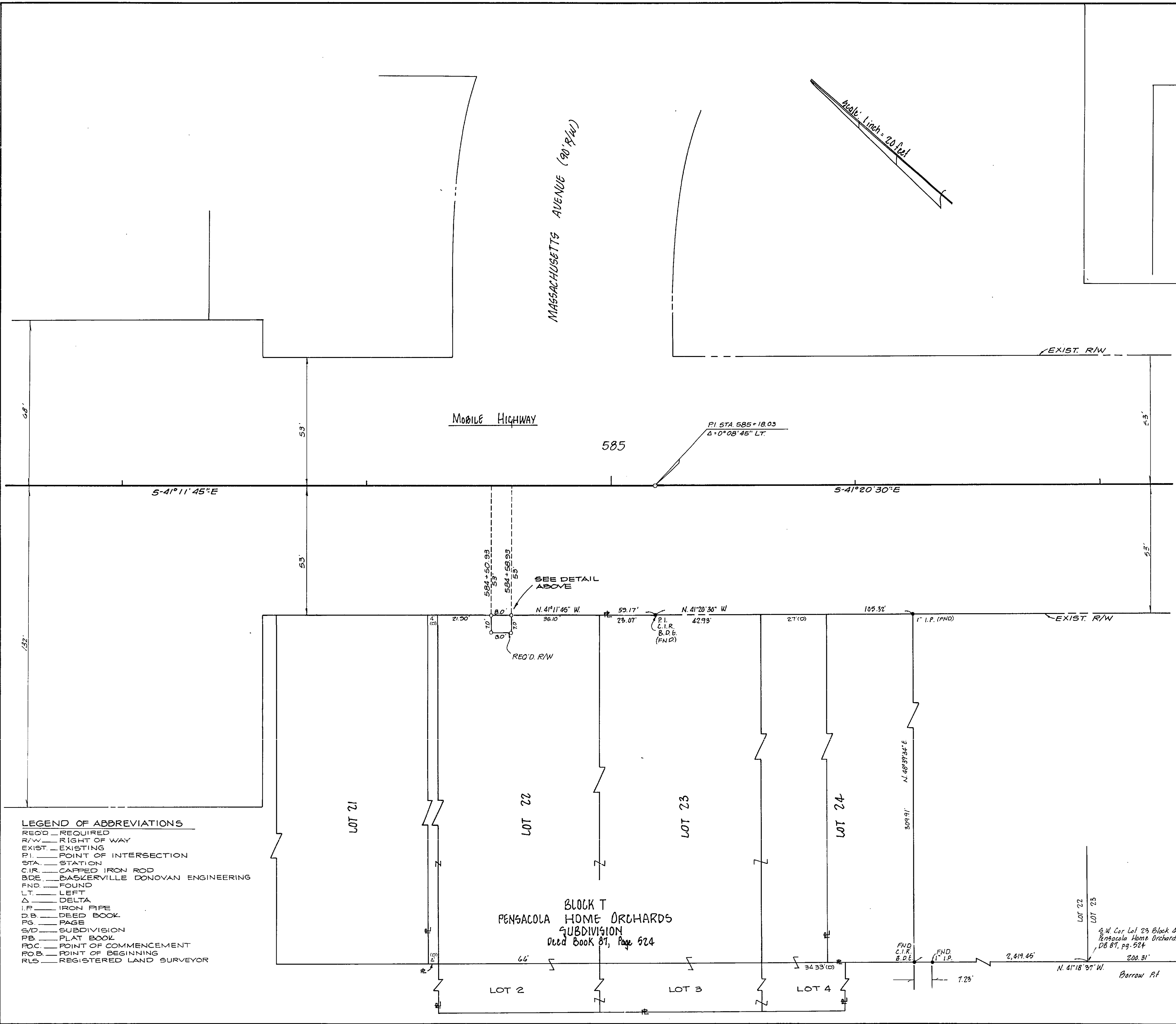
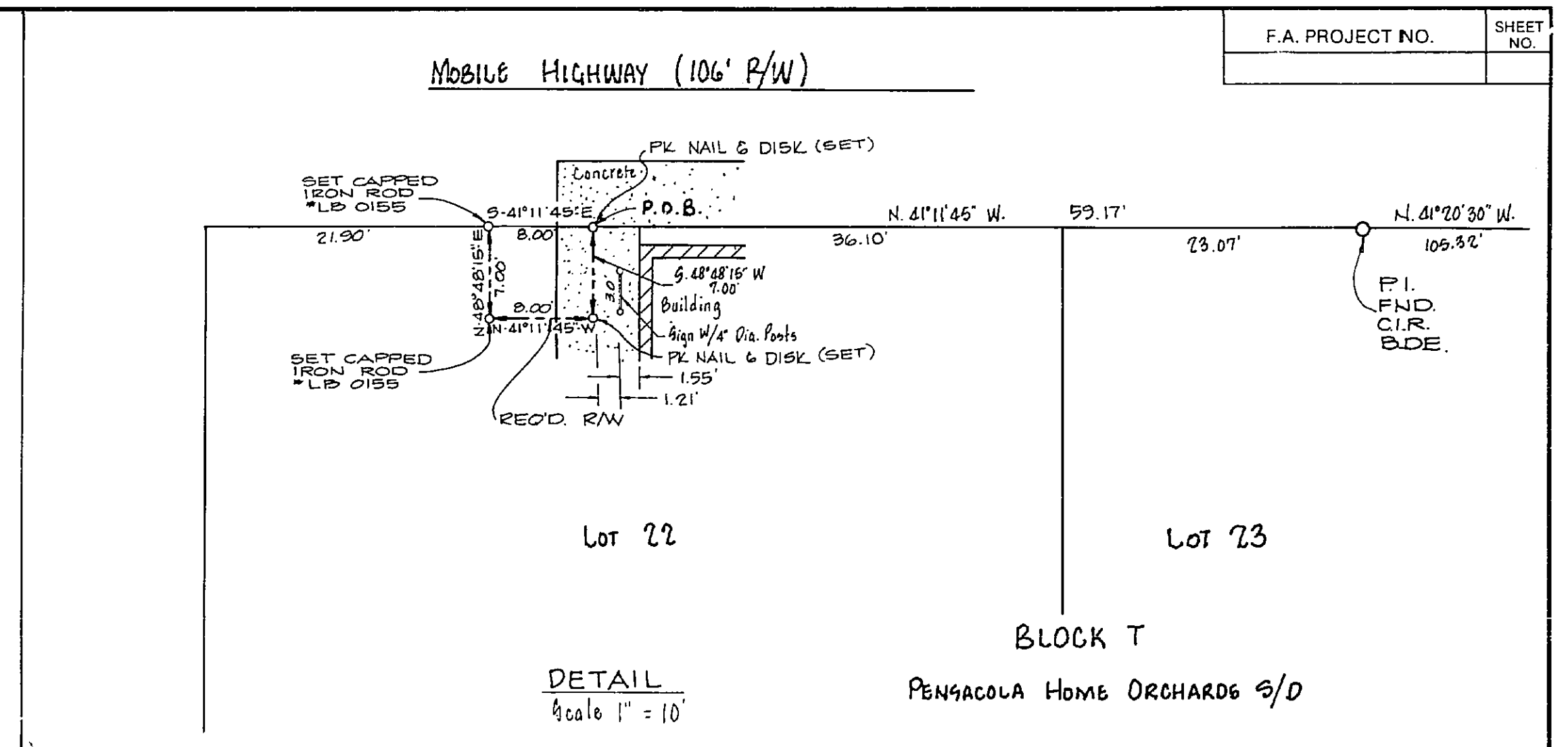
STATE OF FLORIDA
STATE ROAD DEPARTMENT

RIGHT OF WAY MAP

SECTION No. 4802-205
ROAD No. 10-A ESCAMBA COUNTY

SCALE 1" = 100'	NAMES	DATE	APPROVED BY
DRAWN	W.P.	6-28-57	<i>A. C. Diep</i> DIVISION ENGINEER
TRACED	W.P.	6-28-57	
INDEXED			<i>[Signature]</i> STATE HIGHWAY ENGINEER
REVISED	M.S.	2-23-59	
REVISED	M.S.	6-22-55	
REVISED	M.S.	12-7-59	
ADD. REVISIONS	J.L.B.	11-4-58	
ADD. REVISIONS	J.L.B.	12-9-58	

4802 205 10 10 10



LEGEND OF ABBREVIATIONS
 REOD - REQUIRED
 R/W - RIGHT OF WAY
 EXIST. - EXISTING
 P.I. - POINT OF INTERSECTION
 STA. - STATION
 C.I.R. - CAPPED IRON ROD
 B.D.E. - BASKERVILLE DONOVAN ENGINEERING
 FND - FOUND
 L.T. - LEFT
 Δ - DELTA
 I.P. - IRON PIPE
 D.B. - DEED BOOK
 PG. - PAGE
 S/D - SUBDIVISION
 P.B. - PLAT BOOK
 P.O.C. - POINT OF COMMENCEMENT
 P.O.B. - POINT OF BEGINNING
 R.L.S. - REGISTERED LAND SURVEYOR

Note:
 All information on this sheet was derived from a field survey dated August 6, 1991 by Harold W. Priddy, R.L.S. No. 3758 for the Department of Public Works, Escambia County, Florida.

FLORIDA DEPARTMENT OF TRANSPORTATION RIGHT OF WAY SURVEYING AND MAPPING			
STATE ROAD NO. 10-A		ESCAMBIA COUNTY	
BY	DATE	APPROVED BY	DATE
DRAWN	N/A	N/A	R. L. Hood 8-22-91
TRACED	ELM	8-20-91	DISTRICT SURVEYOR ADMINISTRATOR
CHECKED	RG	8-20-91	
MAPS PREPARED BY THIRD DISTRICT		FIELD BOOK NO'S N/A	
W.P.I. NO.	N/A	SCALE	1" = 20'
REVISION	BY	DATE	SECTION 4802-205 SHEET 10 of 10